

GATEWAY SIGNS		VEHICULAR TRAILBLAZER DIRECTIONAL SIGN	PARKING DIRECTIONAL SIGNS		PARKING SITE IDENTIFICATION SIGNS		SITE IDENTIFICATION SIGN
PRIMARY	SECONDARY		ATTACHED TO VEHICULAR TRAILBLAZER	STAND-ALONE POST & PANEL	POST & PANEL	PYLON	
\$27,000 - \$40,000	\$12,000 - \$15,000	\$8,000 - \$9,000	\$175 - \$390	\$1,075 - \$4,300	\$7,900 - \$8,100	\$7,725 - \$11,500	\$6,000 - \$7,500

**LEGEND**

**PRIMARY DESTINATIONS**

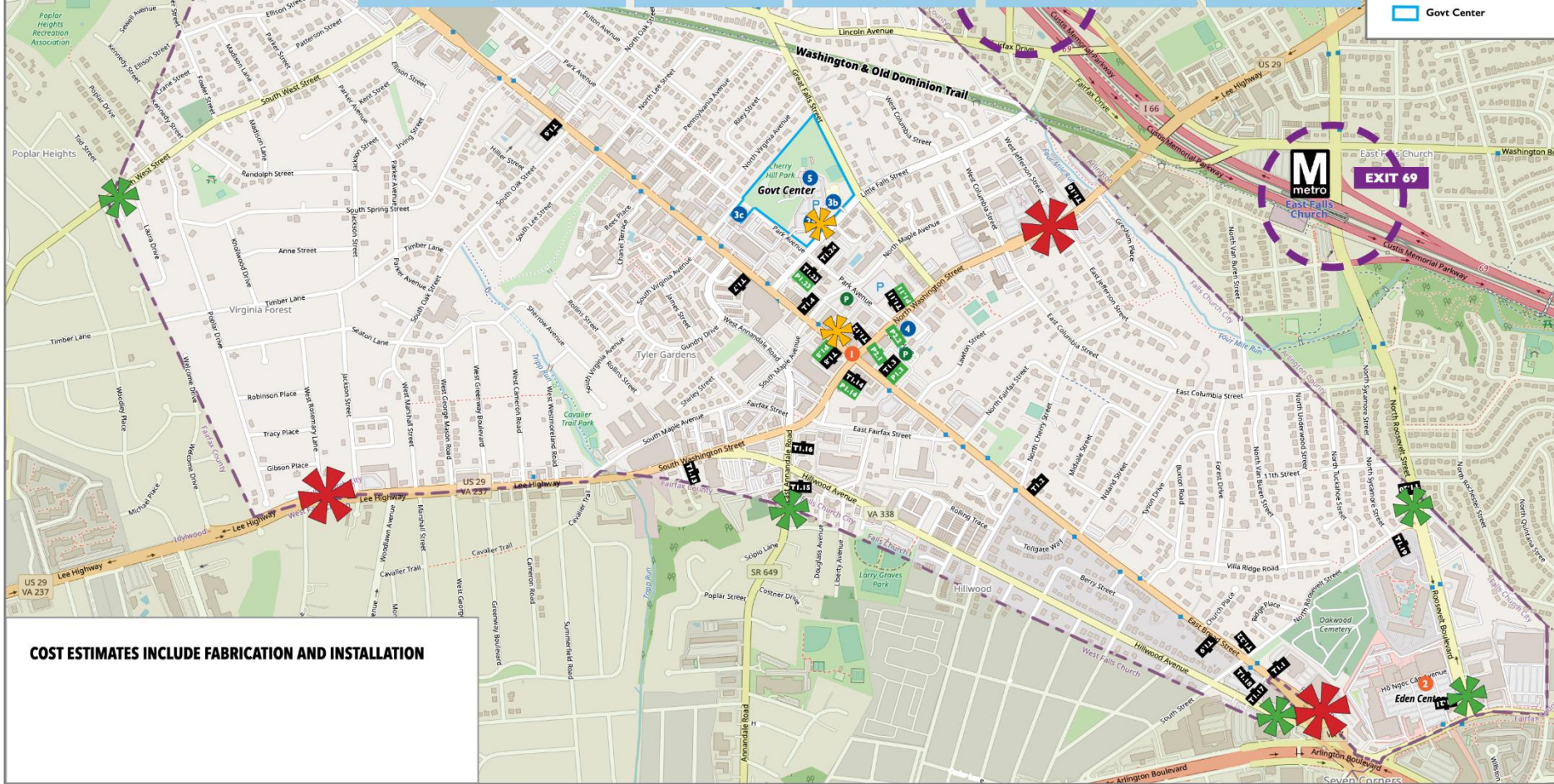
- 1 DOWNTOWN
- 2 EDEN CENTER

**PROXIMITY DESTINATIONS**

- 3 GOVT CENTER
  - a. City Hall
  - b. Community Center
  - c. Library
- 4 STATE THEATRE
- 5 FARMERS MARKET

**Other Symbols:**

- P Public Parking Lot
- Primary Gateway
- Secondary Gateway
- Vehicular Trailblazer Sign
- Parking Directional Sign
- Falls Church Boundary
- Key Decision Nodes
- Govt Center



**COST ESTIMATES INCLUDE FABRICATION AND INSTALLATION**