



# Experience Overview

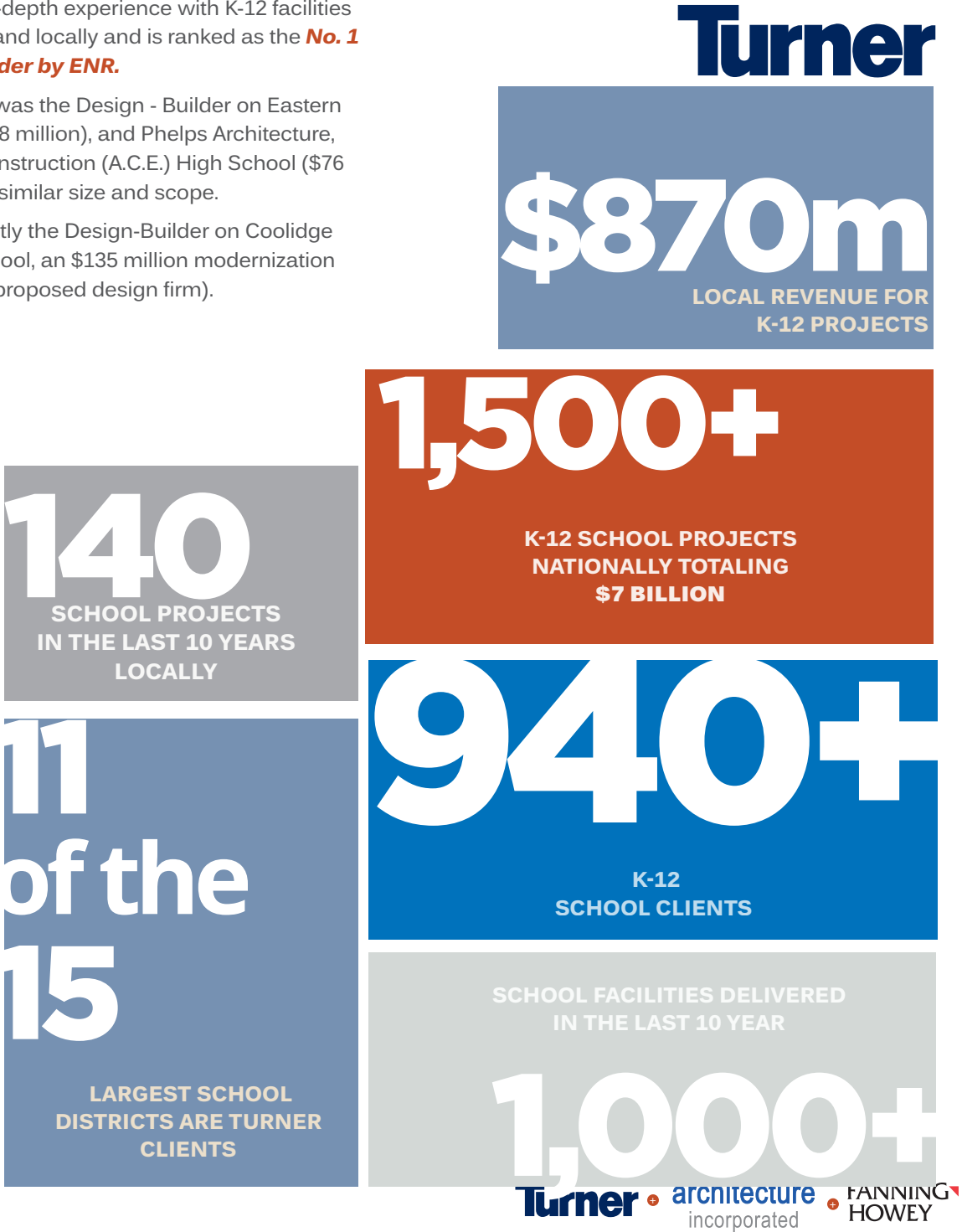
## CONSTRUCTION FIRM EXPERIENCE K-12 EDUCATION BUILDERS

Turner brings in-depth experience with K-12 facilities both nationally and locally and is ranked as the **No. 1 Education Builder by ENR.**

Locally, Turner was the Design - Builder on Eastern High School (\$88 million), and Phelps Architecture, Engineering, Construction (A.C.E.) High School (\$76 million), both of similar size and scope.

Turner is currently the Design-Builder on Coolidge Senior High School, an \$135 million modernization (with the same proposed design firm).

FIGURE C-1 TURNER CONSTRUCTION K-12 STATISTICS

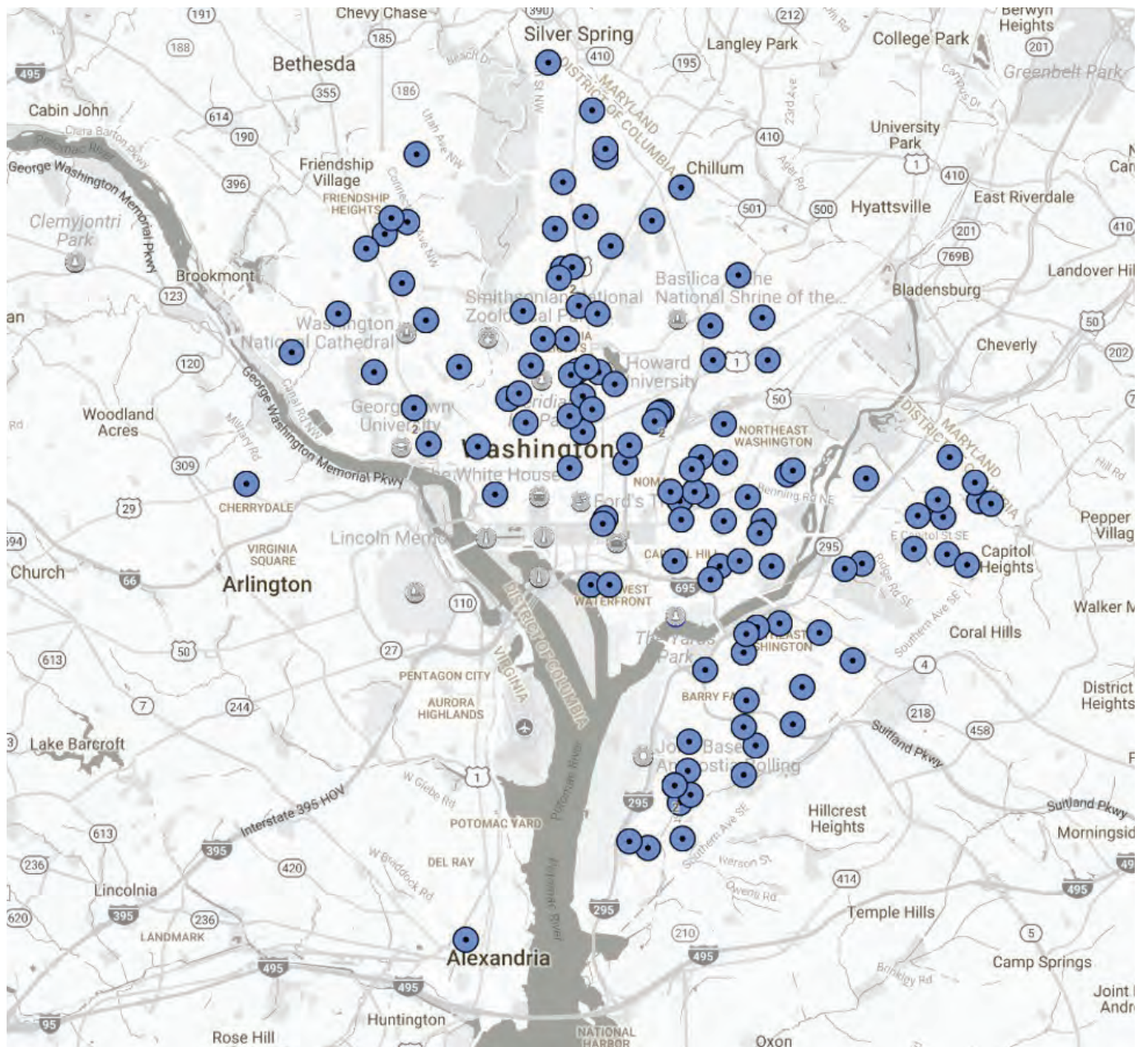


## TURNER LOCAL EDUCATIONAL FACILITY EXPERIENCE

Turner has successfully completed over 140+ school projects in the last 10 years, locally. These projects range from large block new construction to on-call maintenance projects. Shown in Figure C-2 below is a local sampling. We are proud of the knowledge that we have gained from these experiences, which we will bring to the table for the New George Mason High School.

Provided in **Tab I. Optional Information** is a list of Turner's local K-12 experience.

**FIGURE C-2 TURNER LOCAL K-12 FACILITY EXPERIENCE**



**TURNER LARGE PROJECT & DESIGN-BUILD EXPERIENCE**

Turner is a premier provider of design-build services across a range of market segments. Table C-2 lists Turner's projects over \$80 million that are on-going or completed within the last 5 years, leading with those which are design-build.

**TABLE C-2 TURNER'S PROJECT EXPERIENCE OVER \$80 MILLION, LOCALLY**

Project Name	Revenue (Current)	Delivery Method	Contract Type	Certification Level
Camp Lejeune 2nd Anglico and 2nd Intel Battalion Operations Complexes		Design/Build	Lump Sum	Silver
Richmond Justice Center		Design/Build	Cost Guaranteed	Silver
D.C. United Audi Field MLS Soccer Stadium		Design/Build	Cost Guaranteed	Gold
NAVFAC - Shaw AFB Replacement Clinic		Design/Build	Lump Sum	Silver
Inova Fairfax South Patient Tower		Traditional	Lump Sum	Silver
Thomas P. O'Neill Jr. Federal Office Building Modernization		Traditional	Lump Sum	Platinum
Federal Bureau of Investigation Biometric Tech Center		Traditional	Lump Sum	Certified
Montgomery County Judicial Center Annex		Traditional	Lump Sum	Gold
Fort Irwin Weed Army Community Replacement Hospital		Traditional	Lump Sum	Platinum
The New Sibley Hospital		Traditional	Lump Sum	Silver
Project Joshua		Traditional	Cost Guaranteed	N/A
Conrad Hilton CityCenter DC		Traditional	Cost Guaranteed	Gold
Washington Adventist Hospital		Traditional	Cost Guaranteed	Gold
JHU APL Building 201		Traditional	Cost Guaranteed	N/A
MWAA Reagan Redevelopment Secure National Hall		Traditional	Cost Guaranteed	N/A

**RELEVANT PROJECT EXPERIENCE**

Table C-3 highlights Turner's local and national experience with similar K-12 facilities, many of which are over \$80 million, and design-build. Turner is able to share the experiences of 12 school projects with similar scope and size.

We have provided an Attachment C for each one of these projects in Tab G, Contractor's Experience Form. References have been included for each project on Attachment C.

**TABLE C-3**  
**TURNER CONSTRUCTION RELEVANT PROJECT COMPARISON**

**C. QUALIFICATIONS AND EXPERIENCE**

<i>As compared to the New George Mason High School</i>	<b>Phelps ACE</b>	<b>Eastern Senior High School</b>	<b>Coolidge Senior High School</b>	<b>Jefferson-Houston PreK-8 School</b>	<b>Wellesley High School</b>	<b>Concord-Carlisle High School</b>	<b>HS 13 – Sonia Sotomayor</b>	<b>HS 16 – Maya Angelou</b>	<b>HS 5 – Cesar Chavez</b>	<b>River City High School</b>	<b>Mountain House High School</b>	<b>West Clermont New High School</b>	<b>New Settlement Community Campus</b>
Falls Church, Virginia	Washington, DC	Washington, DC	Washington, DC	Alexandria, VA	Wellesley, MA	Concord, MA	Los Angeles, CA	Los Angeles, CA	Los Angeles, CA	West Sacramento, CA	Mountain House, CA	Batavia, OH	Bronx, NY
<b>Completion</b>	August 2008	July 2010	July 2019	August 2014	December 2013	December 2015	July 2011	June 2011	December 2010	October 2008	June 2014	July 2017	April 2012
<b>PROJECT STATISTICS</b>													
<b>Contract cost - \$108 million</b>													
<b>Building Area - 285,000sf</b>	148,000 SF	288,000 SF	350,609 SF	128,000 SF	280,000 SF	238,000 SF	243,600 SF	210,000 SF	250,000 SF	320,000 SF	240,000 SF	383,000 SF	172,000 SF
<b>Student Capacity 1,200 - 1,500</b>	650	1,100	1,220	1,000	1,600	1,225	2,000	2,000	2,100	2,400	2,000	2,400	1,100
<b>High School</b>	✓	✓	✓	.Pre-k-8.	✓	✓	✓	✓	✓	✓	✓	✓	✓
<b>CONTRACT / SERVICES</b>													
<b>Delivery - Design-Build</b>	Design-Build	Design-Build	Design-Build	Traditional, CMAR	Traditional	Traditional	Traditional	Traditional	Traditional	Traditional	Traditional	Design-Build	Traditional
<b>Contract Type - GMP</b>	GMP	Firm Fixed Price	GMP	GMP	GMP	GMP	GMP	GMP	GMP	LLB/GMP	LLB/GMP	Cost Guaranteed	LUMP SUM
<b>Preconstruction Services</b>	✓	✓	✓	✓	ü						✓	✓	✓
<b>CONSTRUCTION CHARACTERISTICS</b>													
<b>New Structure 4-6 Stories</b>	2	t New	Partially New (5)	3	5	4	3	3	3	4-1&3-2 STORY	2	3	4
<b>Structure Type - Steel or Concrete</b>	Steel	Underpinning	Steel & Concrete	Steel	Steel	Steel	Steel	Steel	Steel	Steel & Plaster	Steel	CMU and steel	Steel Frame
<b>Construction Phasing</b>	✓	✓	✓	✓	✓	✓	✓			✓	✓	✓	✓
<b>Occupied Campus during Construction Phase</b>		✓	✓	✓		✓					✓		
<b>Demolition of existing Buildings</b>	✓	✓	✓	✓	✓	✓							
<b>Physical connection to existing facility</b>	✓		✓	✓							✓		
<b>Renovation of existing facilities</b>	✓	✓	✓	✓									
<b>SPORTS FACILITIES</b>													
<b>Multi-Use synthetic Turf Field, Soccer and Field Hockey</b>			Option with Bleachers & Turf	✓	✓	✓	✓	✓	✓	✓	✓	✓	
<b>Tennis Courts</b>		✓				✓				✓		✓	
<b>SUSTAINABLE DESIGN</b>													
<b>LEED Certification</b>	Silver	Gold	Gold - In progress	Gold	Certified	✓	Gold					In progress	Silver
<b>Geothermal HVAC System</b>	✓			✓							✓		
<b>Net Zero Energy Ready Facility</b>											75%		
<b>CIVIL CHARACTERISTICS</b>													
<b>Utilities, Stormwater Management</b>	✓	✓	✓	✓	✓	✓	✓	✓	✓	✓	✓	✓	✓
<b>Landscaping</b>	✓	✓	✓	✓	✓	✓	✓	✓	✓	✓	✓	✓	✓
<b>Tree preservation</b>		✓	✓	✓						✓			
<b>Circulation Improvements - Pedestrian</b>	✓	✓	✓	✓	✓	✓	✓	✓	✓	✓	✓	✓	✓
<b>Car Parking</b>	✓	✓	✓	✓		✓	✓	✓	✓	✓	✓	✓	
<b>Bus Parking</b>	✓	✓	✓	✓									
<b>PROGRAM</b>													
<b>Classrooms</b>	✓	✓	✓	✓	✓	✓	✓	✓	✓	✓	✓	✓	✓
<b>Library / Media / Interdisciplinary</b>	✓	✓	✓	✓	✓	✓	✓	✓	✓	✓	✓	✓	✓
<b>Visual Arts / Photography</b>	✓	✓	✓	✓	✓	✓	✓	✓	✓	✓	✓	✓	✓
<b>Auditorium</b>	✓	✓	✓	✓	✓	✓	✓	✓	✓	✓	✓	✓	✓
<b>Gymnasium</b>	✓	✓	✓	✓	✓	✓	✓	✓	✓	✓	✓	✓	✓
<b>Special Education</b>	✓	✓	✓	✓	✓	✓	✓	✓	✓	✓	✓	✓	✓
<b>Health Services</b>	✓	✓	✓	✓	✓	✓	✓	✓	✓	✓	✓	✓	✓
<b>Dining / Kitchen</b>	✓	✓	✓	✓	✓	✓	✓	✓	✓	✓	✓	✓	✓
<b>Administration</b>	✓	✓	✓	✓	✓	✓	✓	✓	✓	✓	✓	✓	✓
<b>Toilets</b>	✓	✓	✓	✓	✓	✓	✓	✓	✓	✓	✓	✓	✓

The featured projects contained in this proposal have been escalated for time and location.

**DESIGN FIRM EXPERIENCE**



**ARCHITECTURE, INC./ FANNING HOWEY EXPERIENCE WITH K-12 EDUCATIONAL FACILITIES**

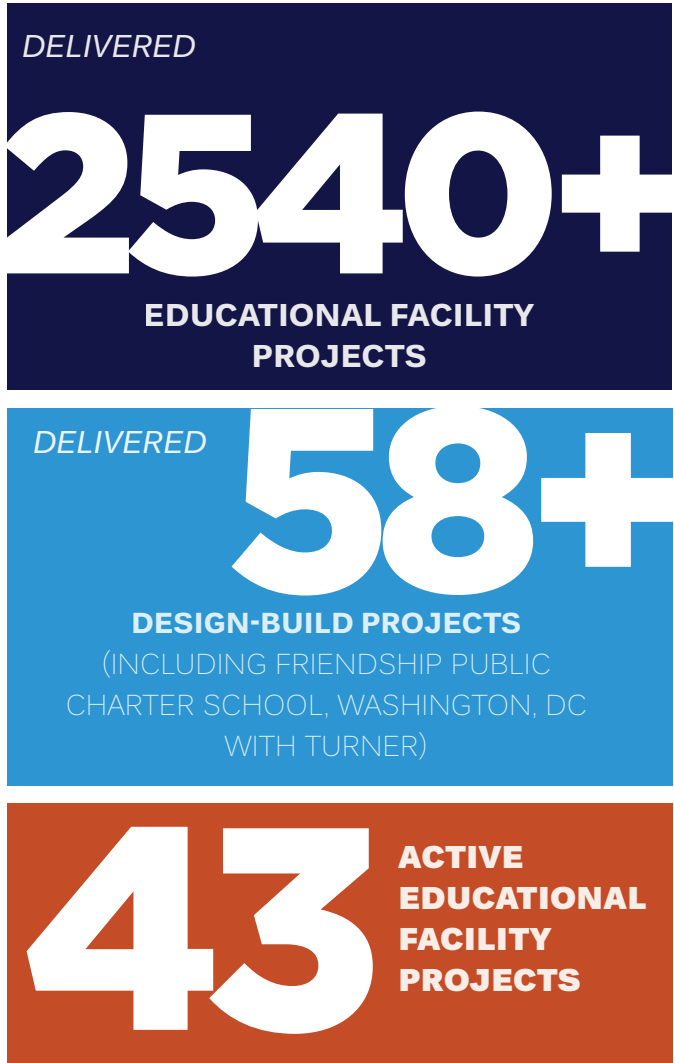
From new construction and renovation, to interior fit-outs and expansions, the design team of Architecture, Inc./Fanning Howey has extensive experience comprised of phased-occupied and complex renovations, detailed programming and educational specifications, and fast-tracked construction. Both firms have professional relationships working with a variety of school districts such as Fairfax, Loudoun, Prince William, and Arlington counties.

Architecture, Inc./Fanning Howey is currently the Lead Designer with Turner on the \$135 million Coolidge Senior High School Modernization in Washington, DC.

In addition to extensive Mid-Atlantic experience, their design leaders have worked on innovative high schools throughout the nation, including:

- Skyline and Cyprus Replacement High Schools,
- Salt Lake City, UT
- V. Sue Cleveland High School, Rio Rancho, NM (James D. MacConnell Finalist)
- British International School of Houston, TX
- Milan Center for Innovative Studies, Milan, MI (2013 Crow Island School Citation)
- Green Level High School, Raleigh, NC
- Glen Oaks Campus, New York, NY

**FIGURE C-3 ARCHITECTURE, INCORPORATED / FANNING HOWEY K-12 NATIONAL STATISTICS**

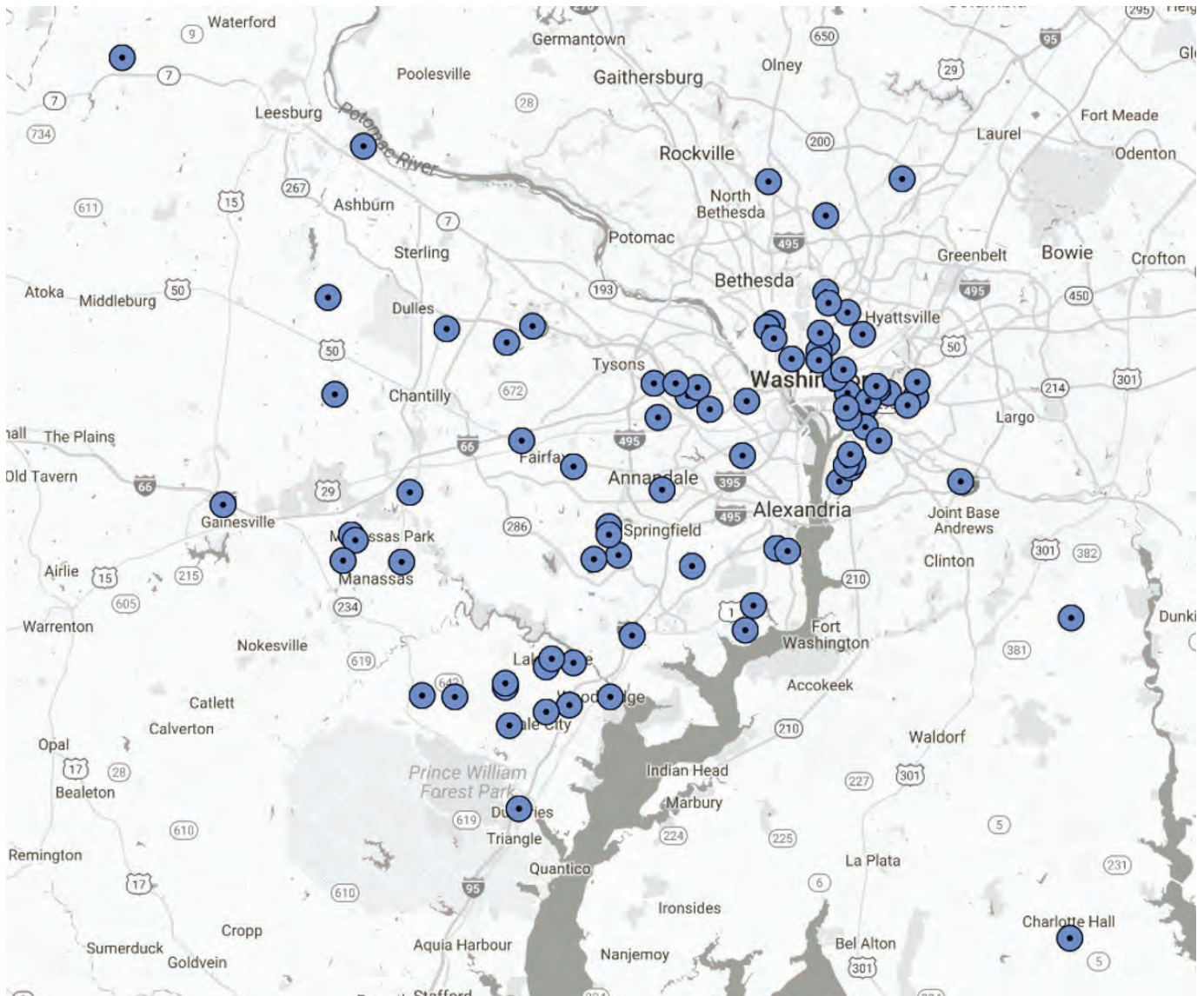




## FANNING HOWEY AND ARCHITECTURE, INC. LOCAL EDUCATIONAL FACILITY EXPERIENCE

Architecture, Incorporated/Fanning Howey have delivered 80 school facility projects, locally. Figure C-4 depicts their reach in the greater Metropolitan Washington area.

**FIGURE C-4 FANNING HOWEY/ARCHITECTURE, INC.  
LOCAL EDUCATIONAL FACILITY EXPERIENCE**



## RELEVANT PROJECT EXPERIENCE

We have provided Attachment D for the Design Team's Relevant Projects in Tab H, Designer's Experience Form. References have been included for each project.

**DESIGN-BUILD TEAM EXPERIENCE**

The entire Design - Build team has a well established history of working together. Specifically, Turner has a well established history of working with the proposed Design Team of Architecture, Incorporated/ Fanning Howey, both nationally and also in the greater Washington metropolitan area.

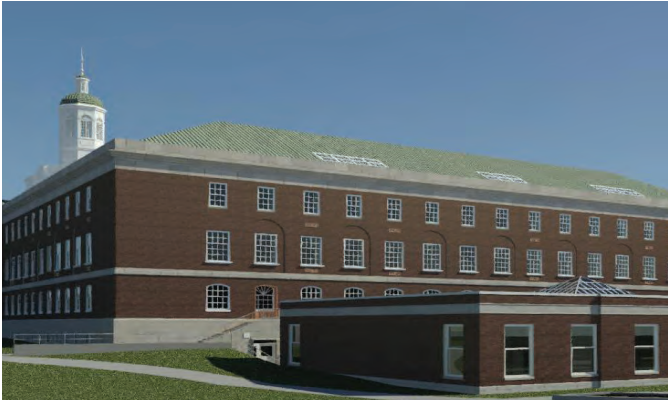
***This same team (Turner/Architecture, Incorporated/ Fanning Howey) is currently working together to deliver the deliver the \$135 million Coolidge Senior High School Modernization Project in Washington DC.*** The scope of work includes renovations to the existing 271,300 SF school originally built in 1940 and the adjoining 190,000 SF activity center built in 1987 to hold over 800 high school students. The scope also includes the addition of a new middle school which will be added to the site, holding over 650 students. The project is designed to achieve LEED Gold Certification and is expected to be completed in time for the Fall 2019 school year.

***Turner and Architecure Inc. team have delivered nearly 20 projects together.*** Turner and Architecture Inc. recently delivered the Design-Build Friendship Technology Preparatory Academy Public Charter School and the Design-Build British International School of Washington, both in Washington DC.

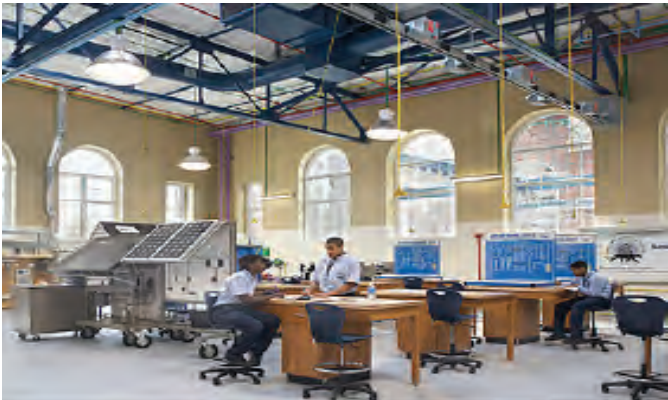
***Turner and Fanning Howey have successfully delivered nearly 100 projects worth over \$1.2 billion nationally*** in their rich and long history teaming together. The Turner/Fanning Howey team have delivered the Design-Build Phelps Architecture, Construction and Engineering (ACE) High School (\$86.2 million), and the Eastern Senior High School Renovation Design-Build (\$76 million) in Washington, D.C.

With a **strong previously developed relationship**, the Turner, Fanning Howey and Architecture Inc. team is confident in our ability to successfully deliver the New George Mason High School Project.

We have provided in **Tab I. Optional Information**, a full listing of the team's projects experience together.



*The same team of Turner/Architecture, Incorporated and Fanning Howey are working together to deliver the \$135 million Coolidge Senior High School Modernization Project in Washington DC.*



*Phelps Architecture, Construction and Engineering High School, in washington, D.C.*



*Friendship Public Charter School, Technology Preparatory Academy in Washington, D.C.*



**EXPERIENCE WITH THE DESIGN AND CONSTRUCTION OF SUSTAINABLE FACILITIES**

For over a decade, Turner Construction has been leading the construction industry in promoting and implementing environmentally sensitive design and construction practices in an approach to building called sustainable construction. Turner has many years of construction and construction management experience in green building and sustainable development, and working closely with environmentally sensitive owners.

Turner is a founding member of the US Green Building Council and has remained active at the local, regional and national levels. Turner has been ranked the Number 1 Green Builder in the country by Engineering News Record magazine for the past nine years consecutively (2007-2016). We bring this unparalleled wealth of sustainability experience to each and every one of our projects.

**Turner**  
**IS THE LEADING GREEN BUILDER**  
**IN THE UNITED STATES**



\*According to ENR Magazine  
 THE GREEN SOURCEBOOK August 2016

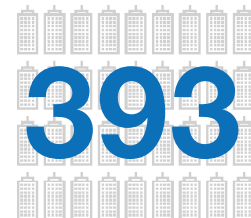
**FIGURE C-5 TURNER CONSTRUCTION SUSTAINABILITY STATISTICS**



**LEED PLATINUM BUILDINGS**



**LEED GOLD BUILDINGS**



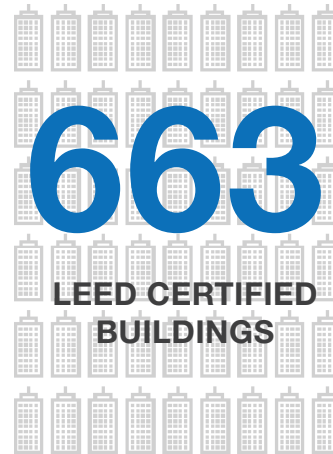
**LEED SILVER BUILDINGS**

Turner Employs  
**1,500 LEED Accredited Professionals**



We delivered  
**\$5.7 BILLION**  
 in GREEN Buildings in 2015

**Totaling**  
**54%**  
 of total revenue.



**MORE THAN DOUBLE**

In 2015, Turner completed more than double the amount of GREEN Buildings than our closest competitor.

**EXPERIENCE WITH THE DESIGN AND CONSTRUCTION OF SUSTAINABLE FACILITIES (CONTD)**

Architecture, Incorporated and Fanning Howey are national leaders in the design of sustainable K-12 schools. The design team’s experience includes multiple LEED Gold-certified schools in the local area, including the current design for Coolidge High School. The team’s portfolio also includes Phelps High School and Eastern High School, which both received a School Project of the Year Award from the National Capital Region chapter of the US Green Building Council. Phelps was also featured in the National Building Museum’s 2013 Green Schools Exhibition.

Architecture, Incorporated and Fanning Howey have a commitment to sustainability that goes far beyond LEED certification. The team’s design experience includes the first Net-Zero K-12 school in the state of Arizona and a new school addition in Cincinnati, Ohio, that is projected to have an Energy Use Intensity of 13 kBtu per square foot – less than many vacant warehouses in the area.

For their work to promote environmentally-responsible school design, the team has received multiple ENERGY STAR Partner of the Year awards from the Environmental Protection Agency.

Further supporting the team their sustainability consultant SBP has delivered 36 school projects including the following in Virginia:

- Camp Allen Elementary School, 150,000 SF
- Campostella Elementary School, 185,000 SF
- Clover Hill Academy, 210,000 SF
- James K. Polk Elementary, 68,000 SF
- John Adams Elementary, 142,300 SF

**FIGURE C-6 DESIGN TEAM SUSTAINABILITY STATISTICS**

